

WARNING:

- Please read and understand this entire manual before attempting to operate or use the product. This will ensure you receive the most enjoyable and trouble-free operation of your new ice maker.
- After receiving the machine, please leave it alone for over 24 hours on a flat surface and then start up the machine.

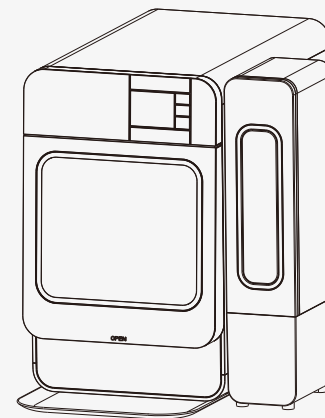
**WELCOME TO GET SUPPORT
FROM US**

VECYS®

ICE MAKER

INSTRUCTION MANUAL

IMPORTANT: READ CAREFULLY, RETAIN FOR FUTURE REFERENCE. MANUAL MUST BE READ BEFORE OPERATING!



Model: IC1501



TABLE OF CONTENTS

Safety Information

Parts & Specs

Preparation Before Use

Maintenance & Cleaning

Understand The Control Board

Operating Instruction

Open/close ice storage drawer

Remove/install ice storage drawer

Install/remove the drip tray

Cleaning

Ice making

Turn lights on/off

Ice full reminder

How To Use The Side Water Tank

Trouble Shooting

Technical Parameters & Electrical Wire Diagram

Safety Information

Please read and understand the entire manual before attempting to operate or use the product. This will ensure you receive the most enjoyable and trouble-free operation of your new ice maker.

⚠ Warning: To avoid fire, electric shock or accidents, please follow these basic safety rules.

- After unpacking the machine, it needs to stand at least 24 hours before powered on.
- Do not damage the power cord or plug. Avoid heating, twisting or pulling power cord. These actions may result in electric short circuit and/or fire.
- Use the correct power socket, the power socket must have reliable grounding, and ensure that the power plug is fully inserted into the socket.
- Due to the safety hazard in some conditions, we strongly recommend not to use an extension cord, if you must use it, please use a 3-wire grounded cord with a rated current (minimum) 15A.
- Do not squeeze or pull the power cord. The power cord should be placed in a place where it will not be disturbed and should not be immersed in water.
- Keep this product away from children or inexperienced unless they are supervised or prompted by those knowledgeable and responsible for their safety.
- Do not use wet hands to plug and unplug the power supply, otherwise it may cause electric shock, burn or other injuries.
- This product must be installed and used correctly, please read this manual carefully before installation.
- This product is only suitable for indoor use at home (such as home, hotel, bar, etc.), do not use it outdoors.
- Do not store or use flammable gas or liquid near the machine.
- Do not store explosives (such as gasoline, accelerant, etc.) in the machine.
- Do not allow children to climb, stand or hang from the ice maker.
- The machine can only be filled with potable water.
- Please cut off the power before manual cleaning, repair or maintenance.
- Do not clean the ice maker with flammable or caustic liquids. This may cause fire or explosion.
- Do not disassemble, repair or change any part of the product.
- Do not use any accessories not recommended by the manufacturer.
- When the UV lamp inside the machine is working, please do not look directly at the light of the UV lamp, it will cause serious damage to the eyes and damage the unprotected skin.
- In order to avoid being hurt by UV light, please do not disassemble and then power on.

⚠ Attention: To reduce the risk of injury to people or things, follow these basic safety precautions.

- Do not remove any safety, warning or product information identification information from the product.
- It is recommended that 2 people carry and install the ice maker to avoid injury.

After the ice maker is disconnected from the power supply, please remove all

the ice from the drawer to prevent the ice cubes from overflowing the machine.

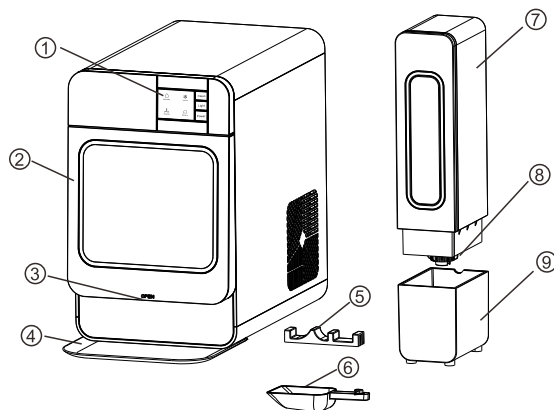
⚠ Warning:  Flammable refrigerants present a fire or explosion hazard.

The refrigerant used in the refrigerator is flammable, please follow the safety warnings below to reduce the risk of injury or financial loss.

- Do not damage the refrigeration pipeline during transportation, installation and operation.
- When maintenance service is required, please contact the manufacturer or a professional and qualified technician.
- A space of more than 150mm should be reserved around the ice maker to ensure good ventilation.
- To defrost, use a plastic or wooden scraper or a wooden scraper. Do not remove mechanical devices or electrical appliances frost, as it can puncture the liner and damage the refrigeration lines.
- Do not use electrical appliances in the water tank/ice basket/ice storage drawer of the ice maker.

Dispose of the device in accordance with federal and local regulations. The flammable refrigerants and thermal insulation materials used require special handling procedures, please contact your local authorities for safe and environmentally friendly disposal of your appliances.

Parts & Specs



NO.	NAME	NO.	NAME
1	Control panel	6	Ice shovel
2	Ice storage drawer	7	Side water tank
3	Drawer hidden handle	8	Side water tank cover
4	Drip tray	9	Side water tank cover
5	Side water tank fixing plate		

Preparation Before Use

⚠ Attention: For your better optimal of the product, please abide by the following information.

- The ice maker is designed for indoor use, do not use it outdoors.
- The ice maker should be placed away from direct sunlight and heat sources.
- A space of more than 150mm should be reserved around the ice maker to ensure good ventilation.
- The location where the ice maker is placed has a suitable socket that meets the safety requirements.

1. Remove the package carefully, do not use sharp tools, which may damage the internal accessories or products.
2. Place the ice maker upright on a stable horizontal surface that can support the weight of the ice maker with water and ice.
3. Open the drawer and take out the instruction manual and ice shovel placed inside.
4. Place the drip tray on the bottom of the front of the ice maker, and push it to the front foot.
5. Thoroughly clean the ice maker with clean water.

Maintenance & Cleaning

⚠ Warning: Must disconnect power and water before maintenance or manual cleaning. (Maintenance and cleaning of the ice maker is not covered by the manufacturer's warranty!)

Maintenance:

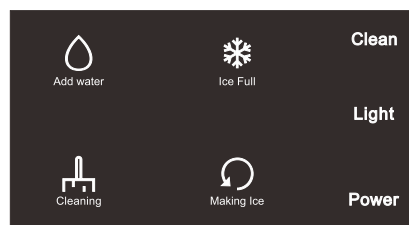
- It is recommended to clean your ice maker once a week in order to keep the ice cubes fresh.
- Always clean up the items and environment around the ice maker and keep the space ventilated.
- The cooling vents can be brushed up and down with a soft brush or a vacuum cleaner with a brush to maintain ventilation and heat dissipation, so as not to affect the cooling efficiency.
- The outside of the machine can be cleaned by scrubbing with a soft cloth, diluted detergent and warm water
- Do not let water flow into the inside of the machine or on the electrical components when cleaning the outside of the ice maker. Please wipe water stains on the outside of the ice maker to avoid electric shock.

Cleaning:

- Thoroughly clean the ice maker with clean water before using the machine.
- If extended periods of none use are anticipated, please clean the ice maker to ensure that no water remains before storage.
- Do not use cleaning agents or solutions that are harmful to people.

1. Take out the ice storage drawer. (see page 9 for details)
2. Use lukewarm water and a soft cloth to wipe the drawer, liner and top ice outlet.
3. The outside of the machine can be cleaned by scrubbing with a soft cloth, diluted detergent and warm water.
4. Turn on the ice machine self-cleaning function to rinse and clean the interior.
5. Use another clean and soft cloth to dry the drawer, liner and top ice outlet to dry any residual water.
6. When cleaning the side water tank, put the side water tank cover back on the side water tank after draining the water.

Understand The Control Board




Button:


Power : ON/OFF button


Light : Light ON/OFF button


Clean : Self-cleaning ON/OFF button

Indicator light:

 **Making Ice :** Making ice indication

 **Cleaning :** Self-cleaning indication

 **Add water :** Lack of water indication

 **Ice Full :** Ice full indication

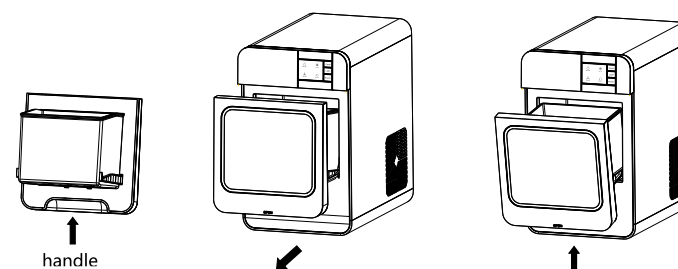
Operating Instruction

1. After the machine is plugged into power, the "Power" button light flashes to Standby Mode.
2. In standby mode, briefly press the "Power" button, all the buttons' indicator lights will be on, the machine enters the Working Ready State.
3. At working ready state, press "Power" to make ice / press "Light" to turn on/off the light / press the "Clean" button for 3 seconds to start self-cleaning.

Please note: The "Making Ice" mode and "Cleaning" mode cannot be used at the same time. One mode must be turned off before the other is turned on.

Open/close ice storage drawer

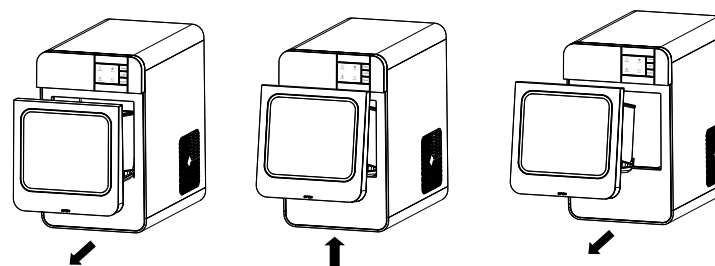
When opening the ice storage drawer, hold the handle at the bottom of the drawer (the handle position is behind the OPEN, see the figure below) and pull the drawer outward in a horizontal direction gently until the lower edge of the drawer hooks the left and right limit posts of the inner tank, and then put it down, and the drawer will hang on the machine at a certain inclination angle. When closing the drawer, hold the handle, flatten the drawer upwards, and then gently push it until it is completely closed.



Remove/install ice storage drawer

When removing the drawer, hold the handle under the drawer and gently pull it out in the horizontal direction until the lower edge of the drawer hooks the left and right limit posts of the inner tank, lift it up to a certain angle, and then pull the drawer outward to remove it.

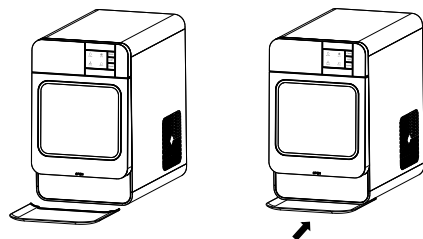
When you need to re-install the drawer, first lift the drawer up to a certain angle, then put the raised hooks on the back of the drawer into the left and right limit posts of the inner tank, and then gently push the drawer until the drawer is completely closed.



Install/remove the drip tray

When installing the drip tray, place the drip tray on the table or countertop and push it to the bottom of the front of the ice maker.

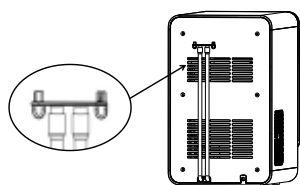
To remove the drip tray, simply pull the drip tray out of the bottom of the ice maker.



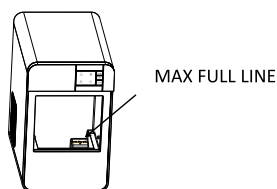
Cleaning

When using the ice maker for the first time, or if the ice maker has not been cleaned for a long time, it is recommended to clean it before making ice. It is recommended to change the water every 24 hours to keep the water clean. To keep the ice cubes fresh, it is recommended to clean your ice maker once a week.

1. Before starting the cleaning process, please check the drain hose on the back of the machine to see whether they are reliably connected to the drain plug (see Pic 1).



Pic 1

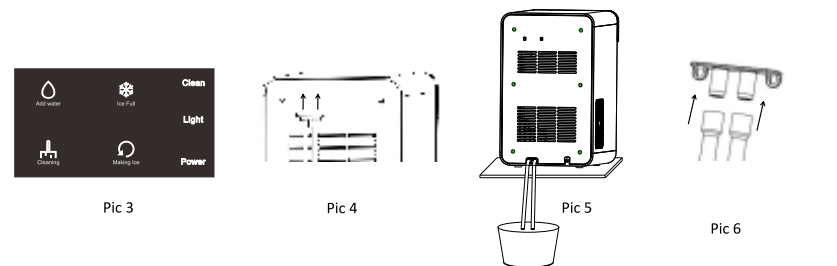


Pic 2

2. Remove the ice storage drawer (see page 9 for details).

3. Add potable water to the inner tank of the ice maker until the "MAX FULL LINE" water level line (see Pic 2).

Note: Do not use caustic cleaning agents or solutions that are harmful to people.



Pic 3

Pic 4

Pic 5

Pic 6

4. After the machine is plugged into power, the "Power" button light flashes to Standby Mode. In standby mode, briefly press the "Power" button, all the buttons' indicator lights will be on, the machine enters the Working Ready State. At this state, press the "Clean" button for 3 seconds to start self-cleaning. The "Cleaning" indicator light will be on and the water will start to circulate and clean. The self-cleaning function will end automatically after 5 minutes, the "Cleaning" indicator light will be off at the same time (see Pic 3).

5. The cleaning function can be turned off by pressing the "Clean" button again during the cleaning process.

6. After cleaning, remove the plug of the drain pipe on the back of the device (see Pic 4).

7. Then put the drain pipe into a water container (such as a sink or a bucket) that is lower than the level of the ice maker (see Pic 5), and let the water inside the ice maker drain completely (see Pic 6).

8. When the water inside the ice machine is completely drained, re-insert the drain hose plug into the drain hose plug.

9. Repeat steps 3 to 7 for repeated cleaning.

10. After cleaning, reconnect the drain plug to the back of the ice maker.

11. After cleaning, add potable water to the inner tank of the ice maker to start making ice.

Ice making


1. Before starting making ice, connect the side water tank (if present) to the ice maker. (See page X for details)

2. Fill the ice maker tank with potable water up to the "MAX FULL LINE" level.

3. At working ready state, press "Power" to make ice, the "Making Ice" indicator light will be on when making ice. Press "Power" for 3 seconds can stop making ice.

4. During the ice making process, the amount of ice stored in the drawer can be observed through the transparent window.

5. For the first use, if it has been used for 1 week or has not been used for an extended period, it is recommended the machine be cleaned before making ice, additionally, it is recommended to discard the ice made in the first hour.

6. During the ice making process, if the “” indication is on, the ice maker will stop working, reminding you to add water to the inner tank or side water tank of the ice maker. After adding water, a long press of the power button “Power” to turn off the machine first, and then turn on the ice making function again, otherwise it will take a long time or stay in the water shortage reminder state.


7. After the ice making function is turned off, the compressor will stop first, the internal motor will delay for 2-3 minutes, and the ice bucket will be automatically emptied and then shut down.


Turn lights on/off

In the working ready state, press the “Light” to turn on the interior light, and press it again to turn off.

Whether the light is on or off can be observed through the transparent window of the drawer.

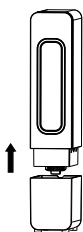
Ice full reminder

When the “” indicator light is on, it means the ice maker drawer is full of ice Cubes. The ice maker will automatically continue to make ice when the ice cubes are removed.

 **Note:** After the ice maker is disconnected from the power supply, please remove all the ice in the drawer to prevent the ice cubes from overflowing the machine.

How To Use The Side Water Tank

1. Take out the side water tank from the base (see Pic 7), make it upwards (see Pic 8), then rotate the side water tank cover to the OPEN direction (see Pic 9) and remove it from the side water tank (see Pic 10), use warm water or detergent to rinse the side water tank, side water tank cover, sealing valve on the cover and side water tank base.



Pic 7



Pic 8



Pic 9

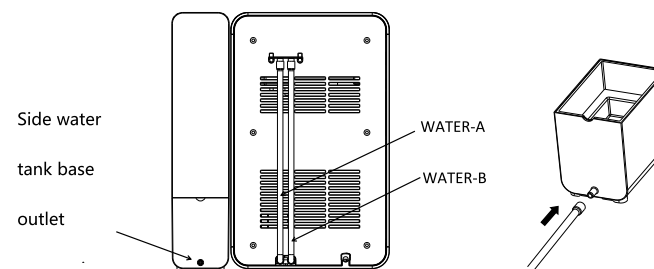


Pic 10

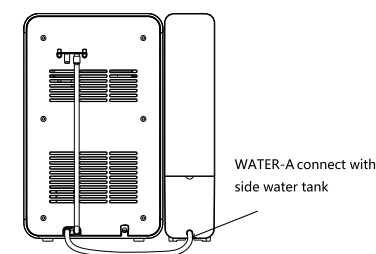
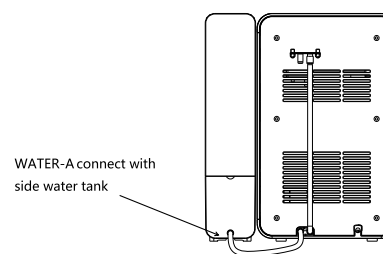
2. Unplug the ice maker and remove the drain plug at the back. (Drain the water first if there is water in the liner.)

3. Remove the drain hose marked "WATER-A" from the drain hose plug, connect it to the side water tank base outlet connection (see picture below), and place the hose horizontally on the countertop.

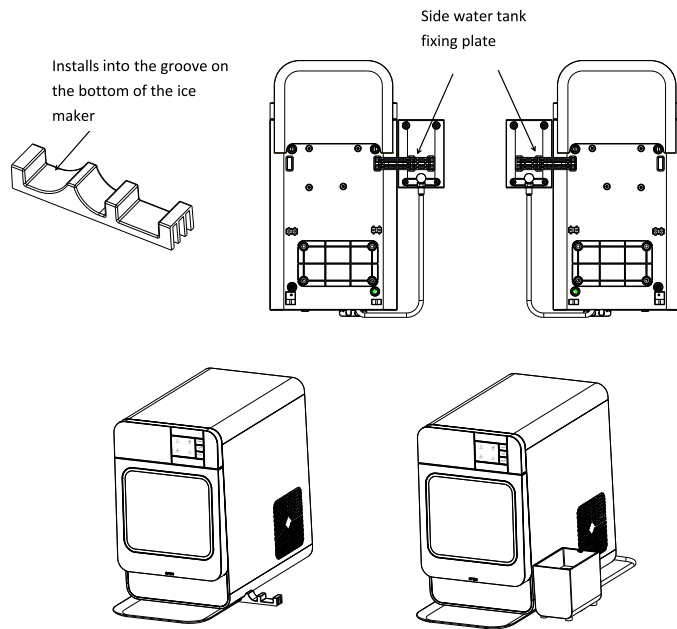
Note: Do not bend or pinch the pipe, or it may affect the water supply.



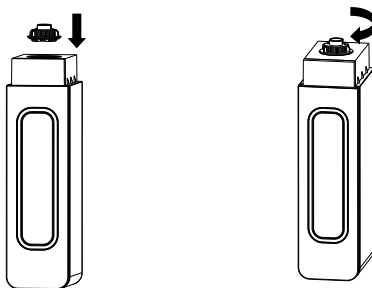
4. The side tank can be placed on the left or right side of the ice maker (see picture below).



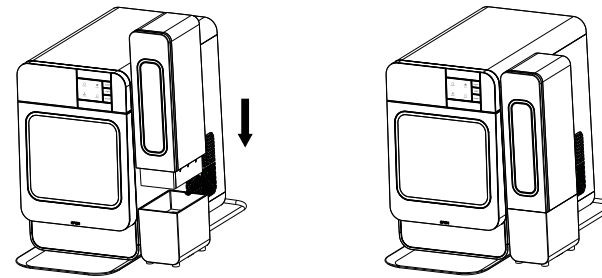
5. Install the curved side of the side water tank fixing plate into the groove at the bottom of the ice maker, and then insert the groove of the side water tank base into the boss of the side water tank fixing plate (see the pic below).



6. Remove the side water tank cover from the side water tank, fill the side water tank with potable water, then put the side water tank cover back and turn it in the CLOSE direction to tighten it (see the figure below). Make sure that the sealing ring is in the correct position and there is no water leakage during installation.



7. Insert the side water tank filled with drinking water into the base of the water tank, and the water will flow into the ice maker. During the process of water flowing into the ice maker, the side water tank will periodically appear bubbles. Repeat step 6 to refill the side tank.



NOTE: If there is no water flowing into the ice machine from the side water tank, please check the following:

- Check that the drain hose WATER-A is properly connected
- There may be air in the drain pipe WATER-A, you can press the pipe to discharge the air
- Drain WATER-A is uneven or pinched by objects

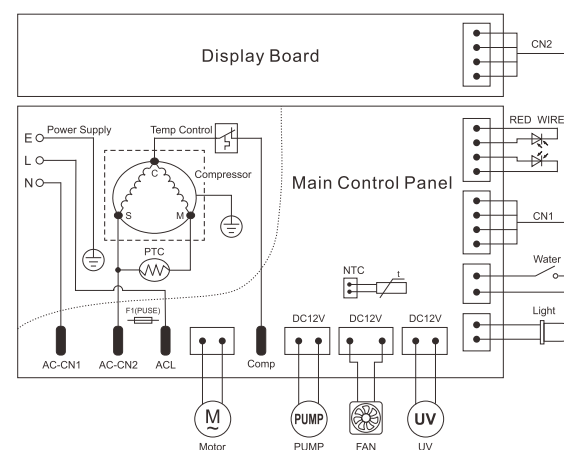
If the above problem occurs, please adjust the drain hose WATER-A to allow the water to flow.

Trouble Shooting

Fault	Potential cause	Solution
"Add water" indicator light on	Lack of water	Stop ice making or cleaning, add water to the water tank of the ice maker, and then start ice making
"Ice Full" indicator light on	The ice storage drawer is full of ice	Remove the ice from the drawer
	No ice	Ice full infrared sensor is affected by objects or dust
Making ice slowly or no ice is made	Mains voltage is too low or socket is too loose	Check power supply and outlet, replace
	The ambient temperature or the water temperature is too high	It is recommended that the working environment temperature of the ice maker is below 32° C (89° F), and the temperature of adding water is 7-32° C (45-89° F)。
	Poor ventilation	Check that the ice maker vents are not blocked, and clear the vents or surrounding items to maintain a ventilated space
	Excessive accumulation of minerals	Start self-cleaning function
Leak of water	Refrigerant leakage	Need professional maintenance
	Drain plug not installed in place	Install the drain pipe into the drain plug
	The drip tray is full of water	Clean up the water in the drip tray in time

Technical Parameters & Electrical Wire Diagram

Product name	Household ice maker
Product model	IC1501
Rated voltage	115V
Rated frequency	60Hz
Ice making capacity/24hr	45LBS
Ice storage capacity	5.5LBS
Climate type	SN N ST
Current	2.8A
Refrigerant/g	R600a/31g
Product size mm	425*260*425mm
Package size mm	610*315*520mm



Contact customer service

If you have any questions or problems, contact Customer Service, Monday through Sunday, 9am-5pm PST(EN).

Technical Support:www.aquarionline.com

WARRANTY

30-Day Money-Back Guarantee and a limited-year-warranty

We stand proudly by our products and take pride in our customer service. We warrant that our products will be free from defects in all materials and workmanship (excluding paint and finish) for the Warranty Coverage Period described below. This warranty is extended only to the original consumer purchaser. During the Warranty Coverage Period, we will (at our sole option) replace any defective part or product covered by this warranty when provided with proof of purchase. The replacement will be without charge.

Coverage Details:

Warranty does not cover normal wear of parts or damage caused by misuse, abuse, overheating and alteration. No alterations are covered in this warranty. AQUART is not responsible for any loss due to neglectful operation. Furthermore, this warranty does not cover products damaged or rendered defective due to accident, misuse, abuse, modification, water damage, neglect, improper handling or storage, improper maintenance or installation, incorporation of third-party components or exposure to weather, natural disasters such as earthquakes, hurricanes, tornadoes, floods, lightning, fires, or failure to follow instructions for use.

ANY WARRANTIES IMPLIED BY LAW SHALL IN NO EVENT EXTEND BEYOND DURATION OF THIS EXPRESS WARRANTY. Some States do not allow limitations on how long an implied warranty lasts, so the above limitation may not apply to you. REPAIR OR REPLACEMENT AS PROVIDED HEREIN IS YOUR EXCLUSIVE REMEDY FOR ANY DEFECTIVE PRODUCT. IN NO EVENT SHALL WE BE LIABLE FOR ANY SPECIAL, INCIDENTAL OR CONSEQUENTIAL DAMAGES OF ANY KIND ARISING OUT OF THE PURCHASE OR USE OF THIS PRODUCT, WHETHER BASED UPON CONTRACT, TORT, STATUTE OR OTHERWISE. Some states do not allow the exclusion or limitation of incidental or consequential damages, so the above limitation or exclusion may not apply to you. This warranty gives you specific legal rights, and you may also have other rights which vary from State to State.

Please keep all original sales receipts from the authorized dealer. Proof of purchase is required to obtain warranty services. Any parts or products returned without written authorization will be discarded without notice. To obtain warranty services submit a warranty request by mailing **support@aquart.cn**. We are happy to help and are available Monday–Sunday, between 9 am to 5 pm PST.

Warranty applies to the United States and Canada.

Exceptions

There is no written or implied performance warranty on AQUART products, as the manufacturer has no control over the installation, operation, cleaning or the maintenance. This warranty will not apply nor will AQUART assume responsibility if your appliance has not been installed, operated, cleaned, and maintained in strict accordance with the owner's manual. This warranty does not cover damage or breakage due to misuse, improper handling or modifications.

Neither AQUART, or authorized AQUART dealer, accepts responsibility, legal or otherwise, for the incidental or consequential damage to the property or persons resulting from the use of this product. Whether a claim is made against AQUART based on the breach of this warranty or any other type of warranty expressed or implied by law, the manufacturer shall in no event be liable for any special, indirect, consequential, or other damages of any nature whatsoever in excess of the original purchase of this product. All warranties by AQUART are set forth herein and no claim shall be made against AQUART on any warranty or representation. For more information regarding specific terms of warranty coverage, email support@aquart.cn.